





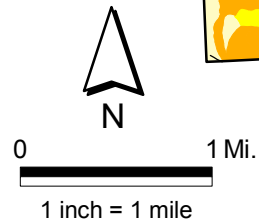
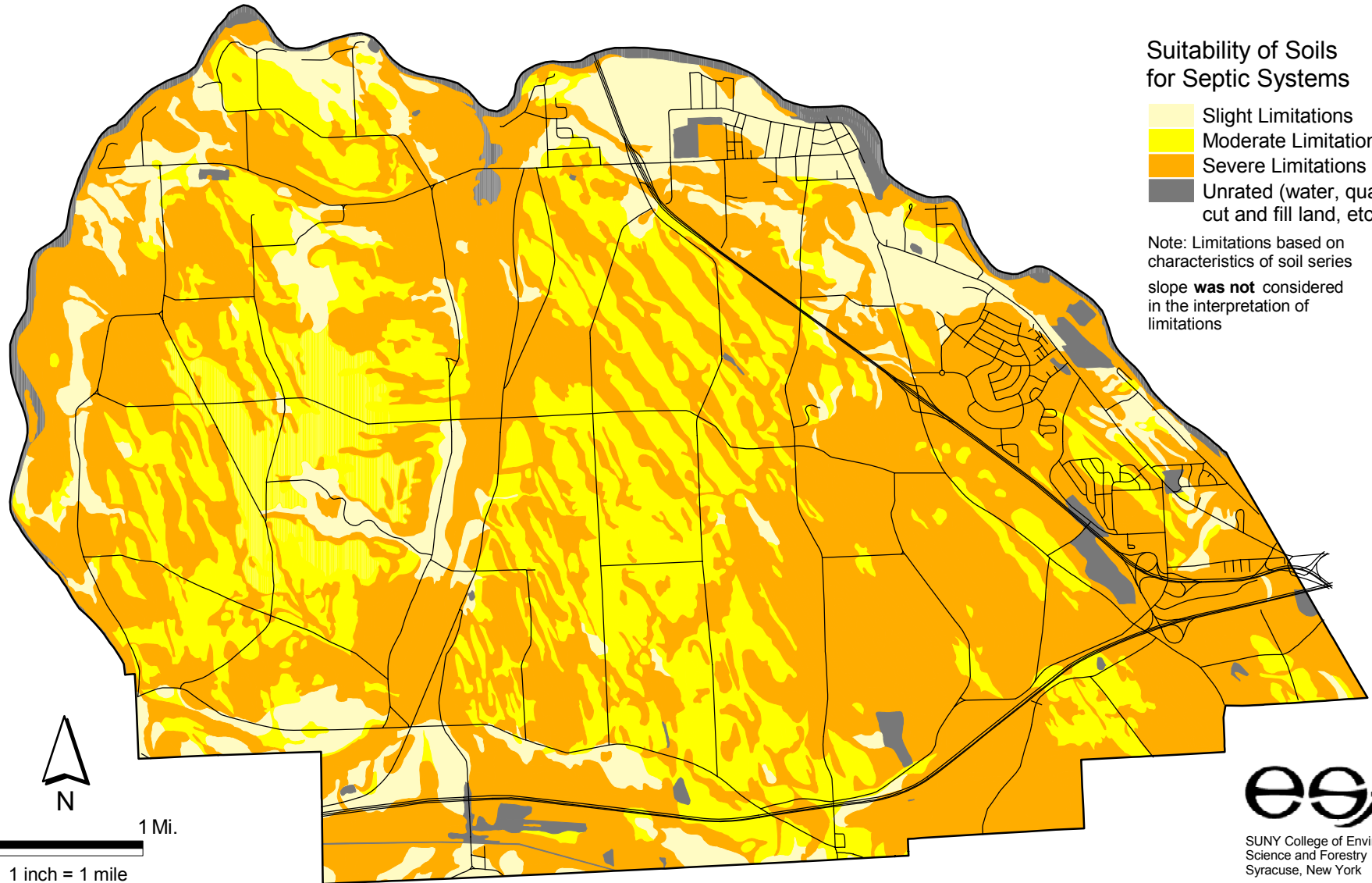
# Suitability of Soils for Septic Systems

## Town of Van Buren

### Suitability of Soils for Septic Systems

-  Slight Limitations
-  Moderate Limitations
-  Severe Limitations
-  Unrated (water, quarries, cut and fill land, etc.)

Note: Limitations based on characteristics of soil series  
slope **was not** considered in the interpretation of limitations



SUNY College of Environmental  
Science and Forestry  
Syracuse, New York  
January, 2001