





Suitability of Soils for Dwellings With Basements

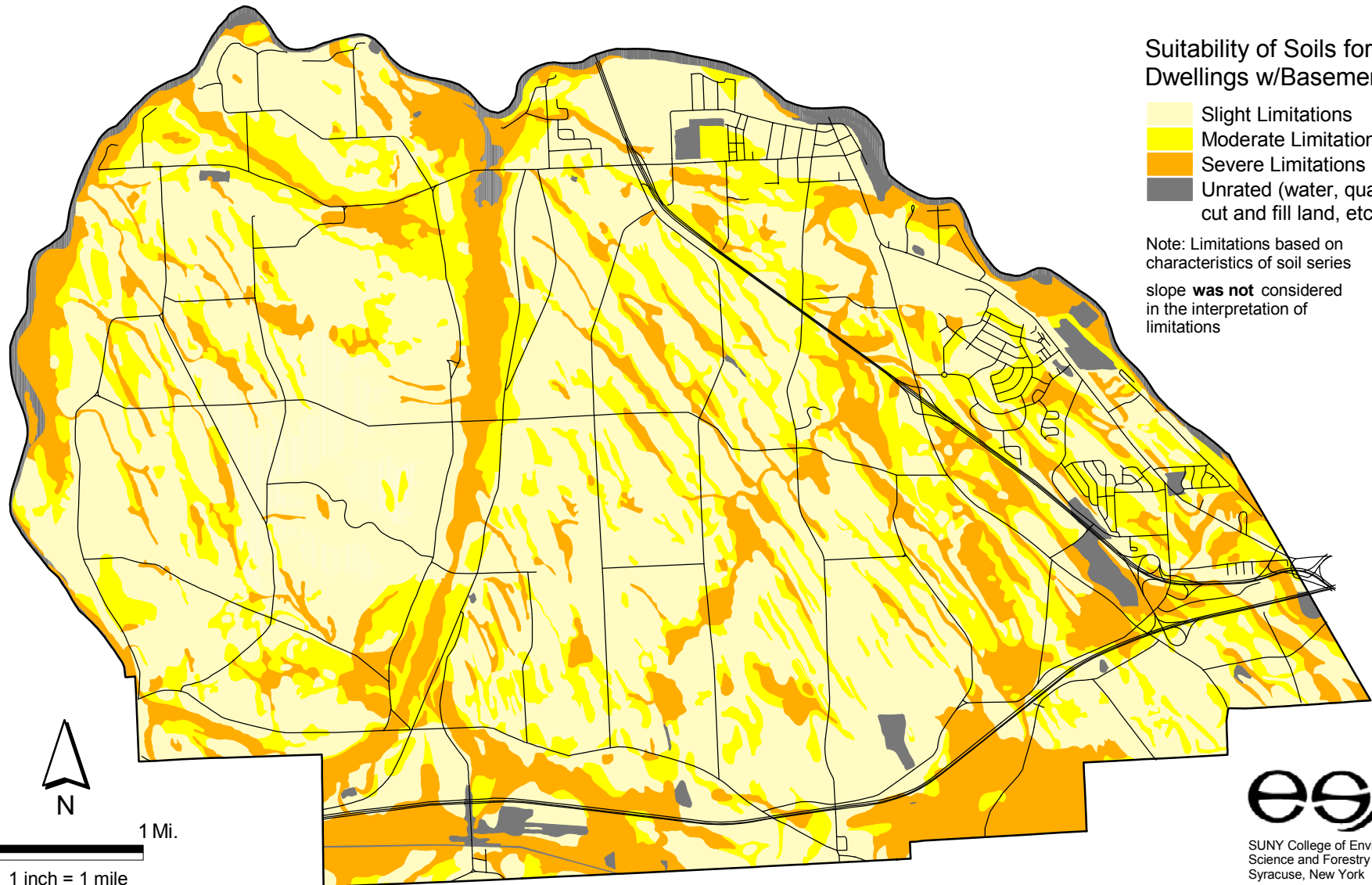
Town of Van Buren

Suitability of Soils for Dwellings w/Basements

-  Slight Limitations
-  Moderate Limitations
-  Severe Limitations
-  Unrated (water, quarries, cut and fill land, etc.)

Note: Limitations based on characteristics of soil series

slope **was not** considered in the interpretation of limitations



SUNY College of Environmental
Science and Forestry
Syracuse, New York
January, 2001